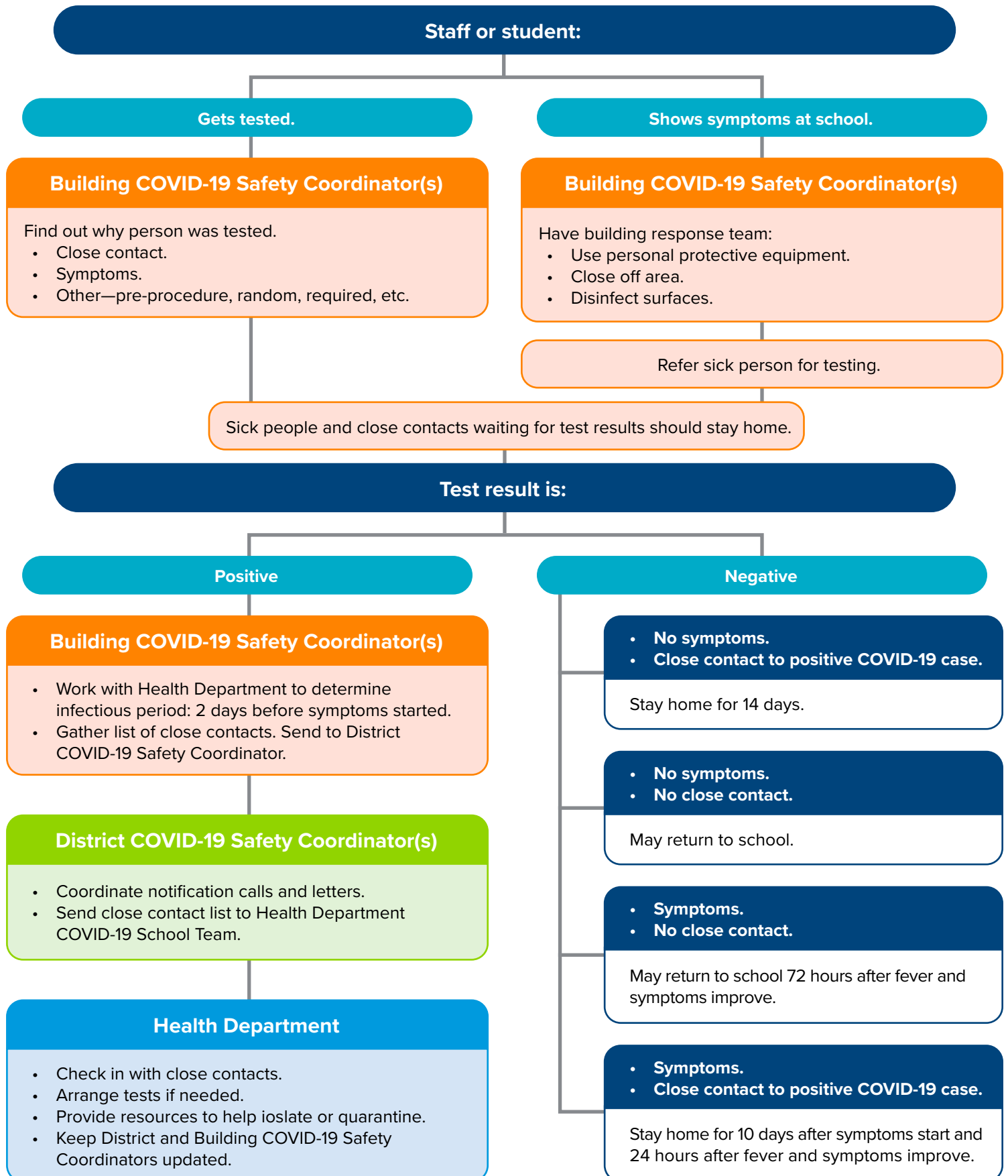
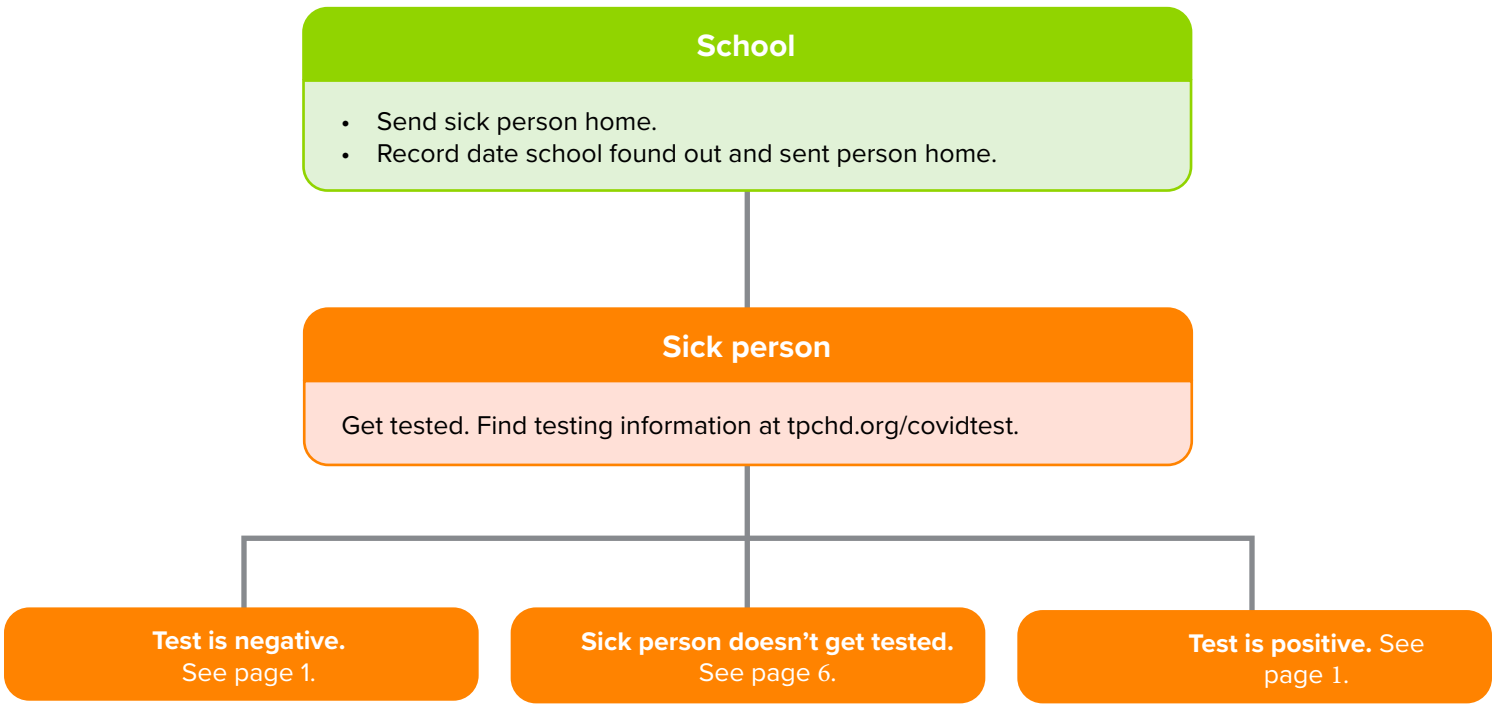


Confirmed or Suspected COVID-19 Cases Flowchart



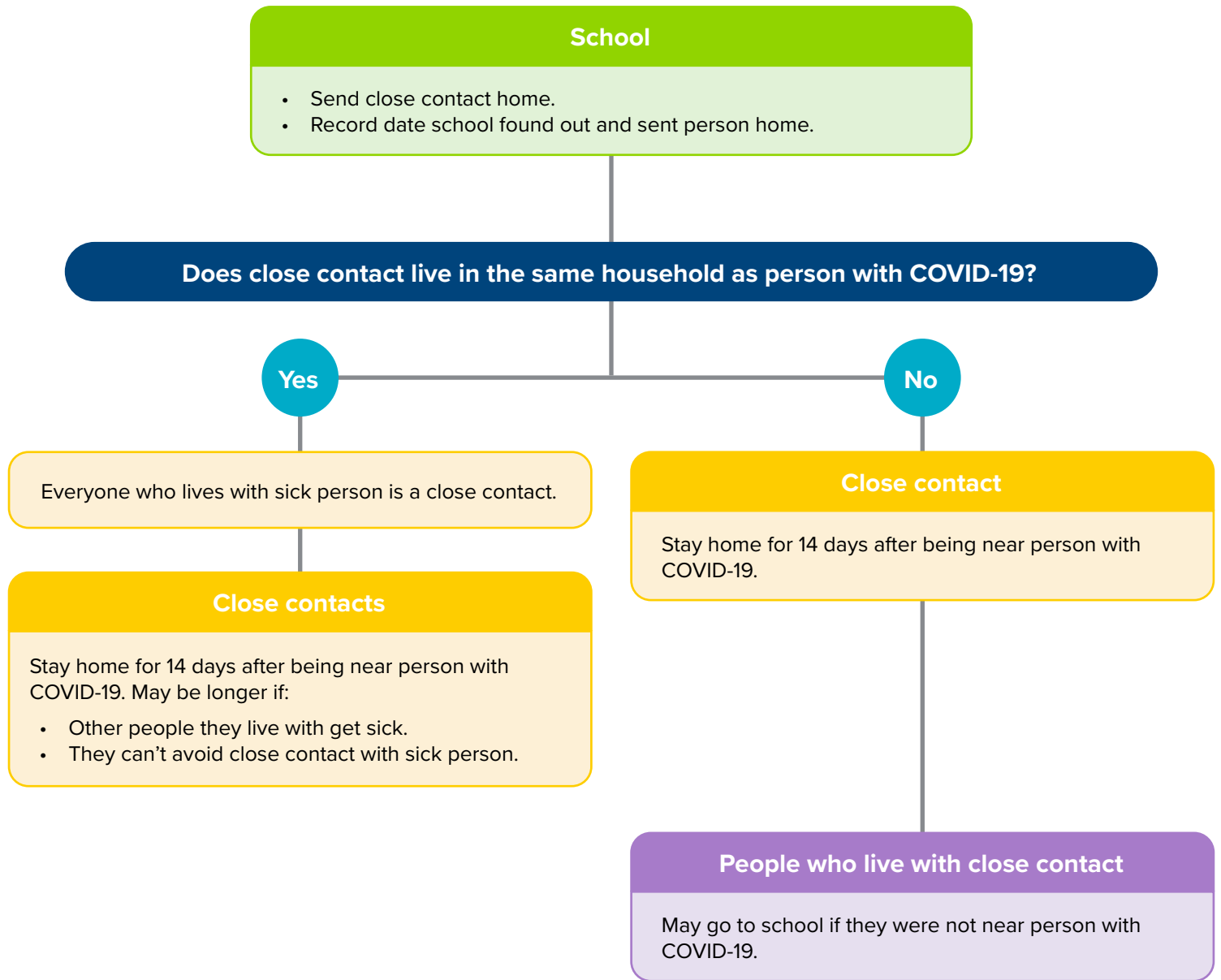
What if student or staff member has COVID-19 symptoms?



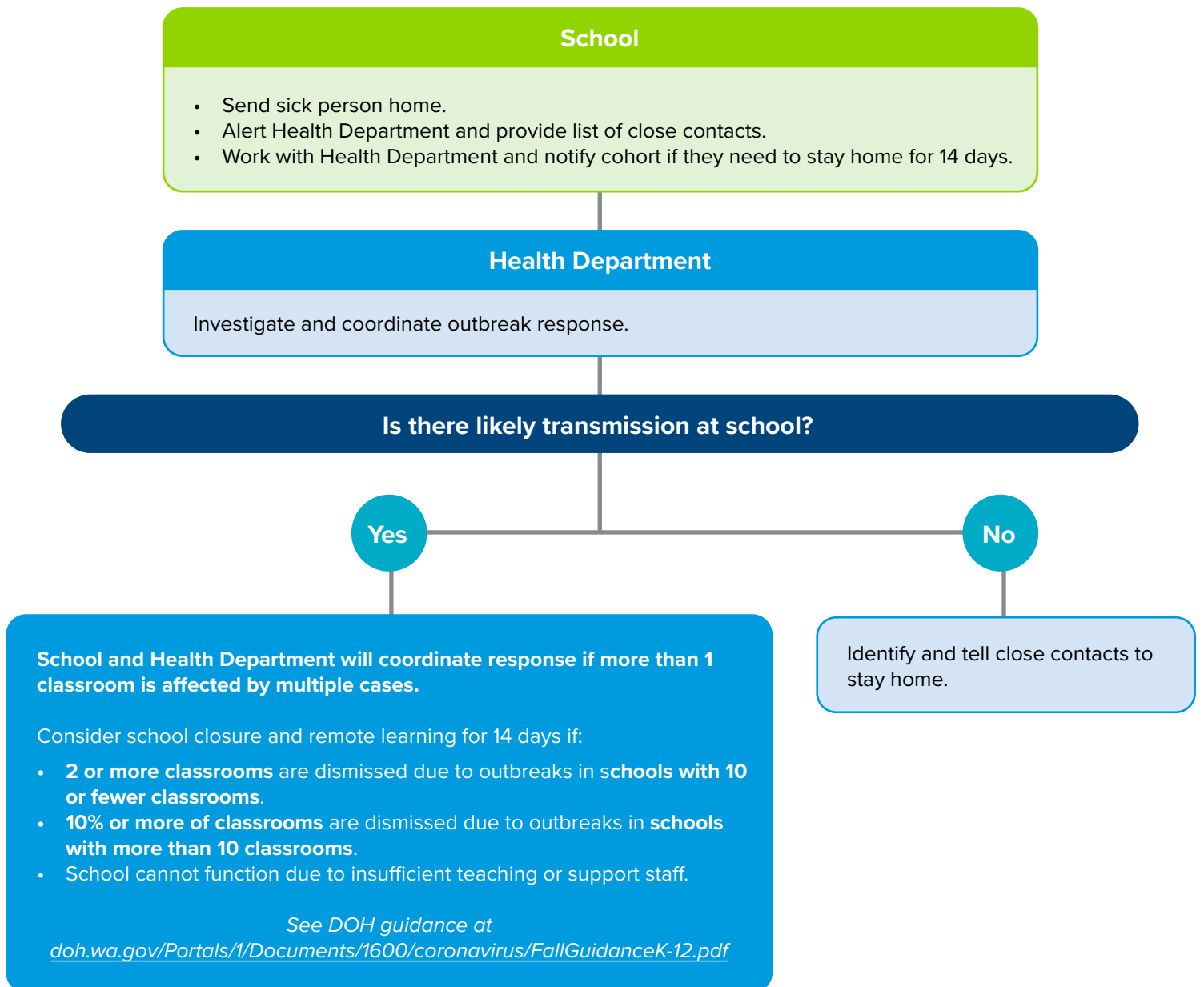
What if a healthy student or staff member is a close contact of a person with COVID-19?

Close contacts include people like the person with COVID-19:

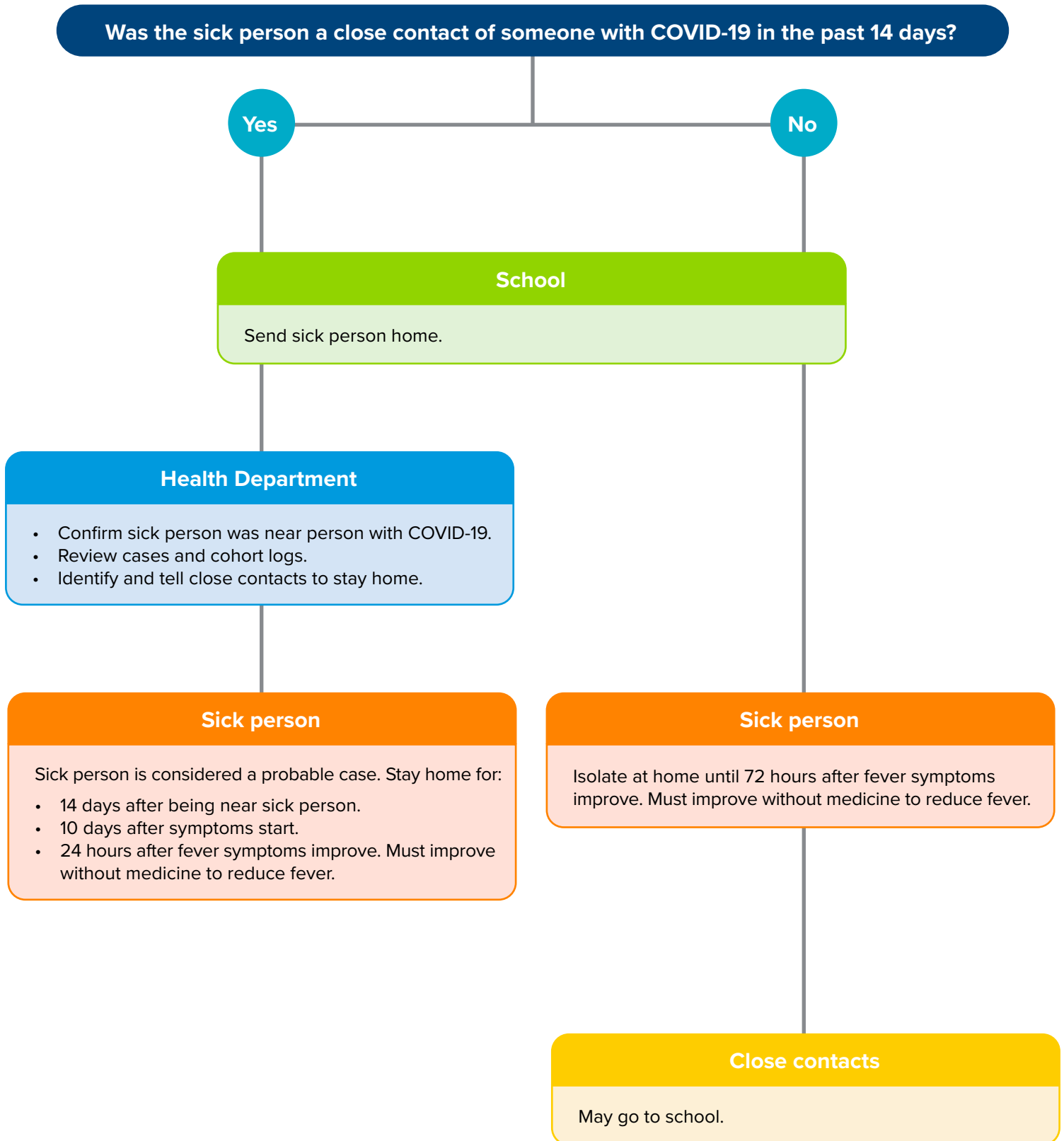
- Lives with—like siblings.
- Is within 6 feet of for more than 15 minutes—like on the bus.



What if 2 or more students or staff members test positive for COVID-19 within 14 days?



What if sick student or staff member tests negative for COVID-19?



What if sick student or staff member does not get tested?

